

ITEM 472

INLETS

472.1 Description. This item shall govern for the construction of inlets of the type designated on the plans including but not limited to all frames, plates, grates and lids.

472.2 Materials. Reinforcing steel shall conform to the Item, "Reinforcing Steel". Concrete shall conform to the Item, "Concrete". Precast concrete inlets shall be manufactured in accordance with the Item, "Concrete Structures".

Cement mortar shall conform to ASTM C270, Type M. Aggregate for mortar shall conform to ASTM C144.

Cast iron for frames, plates, I-beams and grates shall be in accordance with ASTM A48, Class 30 and shall be free from sand, blow holes or other defects. Alternative galvanized steel beam sizes such as S6x17.5 and W6x16 are also acceptable. Machine bearing surfaces of frames and grates shall obtain even bearing. Manhole covers for type "C" inlets shall be 23-1/2".

472.3 Construction. All sections of the inlets will be constructed of reinforced concrete

Prior to setting and/or casting of the inlet, the Contractor shall provide a base of 6" thick cement stabilized sand (2 sacks/ton).

Use non-shrink grout (applied per manufacturers recommendation) to attain a water tight seal at the wall opening of the inlet with the pipe.

For box culvert and arch-pipe (all non-circular applications) connections, use non-shrink grout to ensure a water tight seal.

Neatly cut off inlet leads at inside face of inlet wall and point up with mortar. Shape floor with mortar as shown on the attached detail.

472.4 Measurement. Measure depth of inlets as the vertical distance from the flow line of inlet lead to the top of curb beam and/or top of concrete slab. For inlets constructed with 18-inch leads, the "Type B Inlet" is 3.60 feet deep, standard "Type B-B Inlet" is 4.00 feet deep. A standard "Type F Inlet" is 4.50 feet deep.

For inlets constructed with 24-inch leads, the standard depth for "Type B Inlet" is 4.10 feet deep, standard "Type B-B Inlet" is 4.51 feet deep, a

standard "Type C Inlet" is 4.50 feet deep. A standard "Type E Inlet" is 5.50 feet deep and a standard "Type F Inlet" is 4.50 feet deep.

Any portion of the inlet exceeding the above depth is to be measured per vertical foot of depth.

472.5 Payment

A. Payment for Standard Type Inlets.
Payment for inlets with a standard depth shall be made at the contract unit price for each individual standard type inlet (includes non-shrink grout).

B. Payment for Inlets with an Additional Depth Up to 5 Feet.
When the depth of the inlet specified is greater than the standard depth by 5 feet or less, payment shall be at the contract unit price for each individual inlet (includes non-shrink grout) as follows:

- "Type B Inlet with an Additional Depth Up To 5 Feet"
- "Type B-B Inlet with an Additional Depth Up To 5 Feet"
- "Type C Inlet with an Additional Depth Up To 5 Feet"
- "Type E Inlet with an Additional Depth Up To 5 Feet"
- "Type F Inlet with an Additional Depth Up To 5 Feet"

C. Payment for Inlets with an Additional Depth Greater Than 5 Feet.

When the depth of the inlet specified is greater than the standard depth by more than 5 feet, payment shall be at the contract unit price for each individual inlet (includes non-shrink grout) as follows:

- "Type B Inlet with an Additional Depth Greater than 5 Feet"
- "Type B-B Inlet with an Additional Depth Greater than 5 Feet"
- "Type C Inlet with an Additional Depth Greater than 5 Feet"
- "Type E Inlet with an Additional Depth Greater than 5 Feet"
- "Type F Inlet with an Additional Depth Greater than 5 Feet"

Note: This specification requires drawings

There are line code(s), description(s), and unit(s) for this item.

END OF ITEM 472

SUMMARY SHEET

ITEM 472 - INLETS

Other Specifications Required

Item 440 - Reinforcing Steel

Item 421 - Concrete

Item 420 - Concrete Structures

Reference Standards

1. ASTM C270
2. ASTM C144
3. ASTM A48

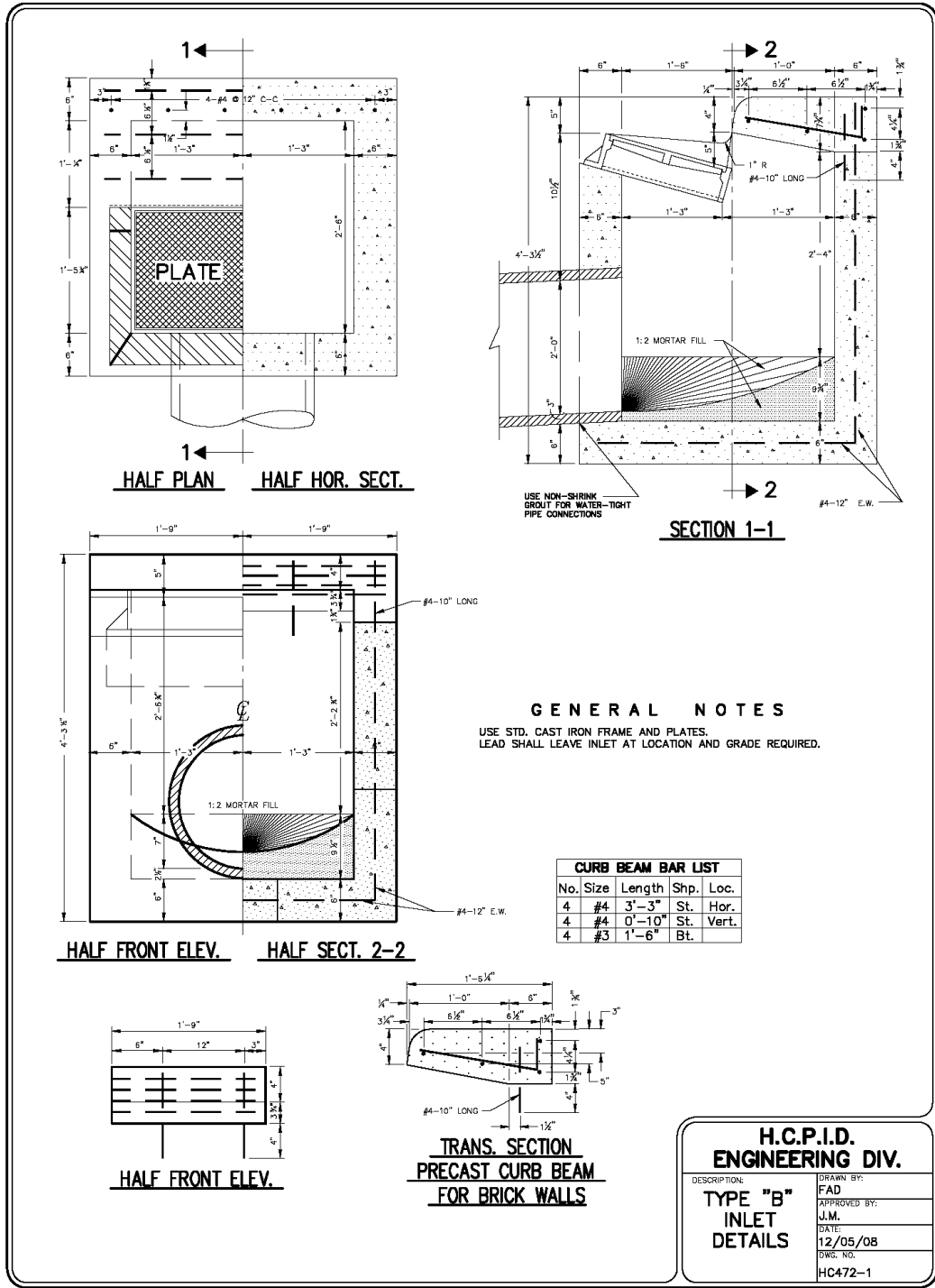
Description

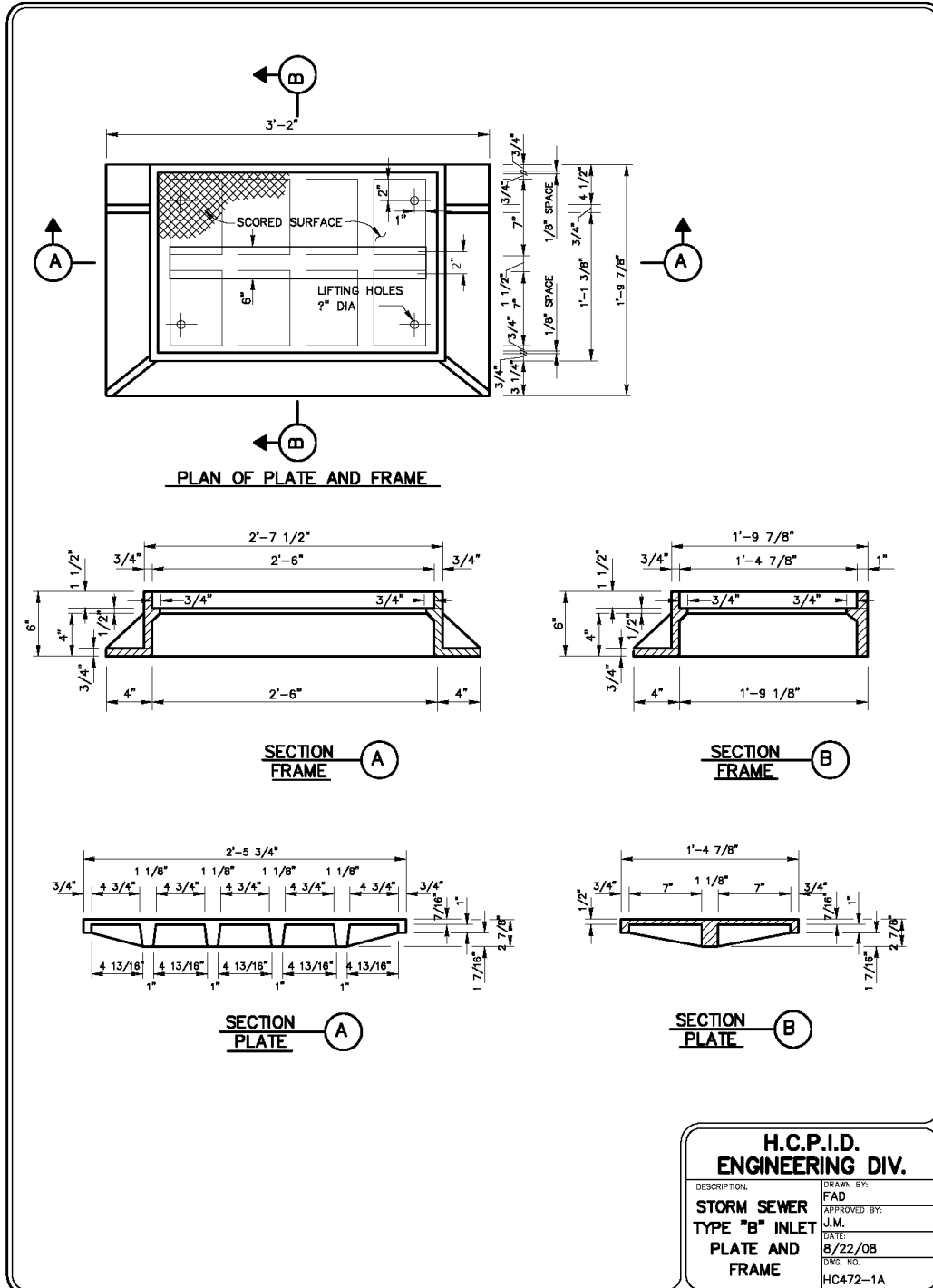
Discusses the requirements for construction of inlets, of the types shown on the plans.

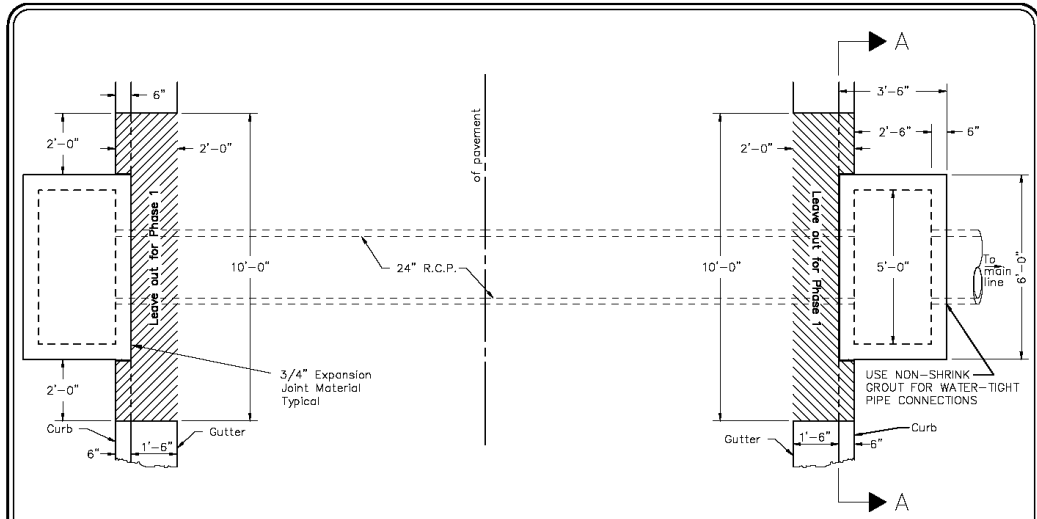
Payment

Paid for at the contract unit price bid Standard Type Inlet,
Standard type inlet with additional depth up to 5 feet,
Standard type inlet with additional depth greater than 5 feet.

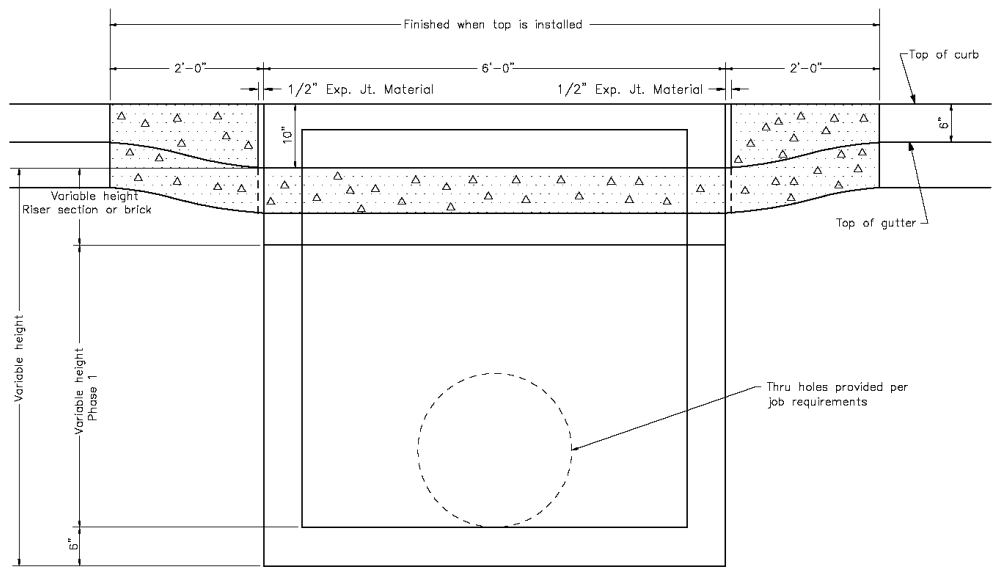
DO NOT INCLUDE THIS SHEET IN CONTRACT SPECIFICATIONS







PLAN



SECTION A-A

H.C.P.I.D. ENGINEERING DIV.	
DESCRIPTION:	DRAWN BY:
INSTALLATION DRAWINGS FOR "H-2" 5'-0" CURB INLET	FAD
	APPROVED BY:
	J.M.
	DATE:
	12/05/08
	DWS. NO.
	HC472-2

